



**Standard Entrance Test**  
**SET Brief**  
**(2016)**

## Contents

|                            |   |
|----------------------------|---|
| What is SET?.....          | 3 |
| SET Introduction .....     | 3 |
| SET MBBS Facets.....       | 3 |
| SET Purpose .....          | 3 |
| About the Test.....        | 4 |
| Test Format.....           | 4 |
| Detailed Test Format ..... | 4 |
| SET weighting system. .... | 6 |

# What is SET?

## SET Introduction

- SET is a standardized entrance examination for China’s MBBS program.
- It was created out of the need establish a common yard stick for direct admission into China’s MBBS program.
- Developed by academic steering committees from China’s Leading MBBS offering universities SET is a benchmark for quality.

## SET MBBS Facets



- ✓ Self-Evaluation
- ✓ Fairness & Transparency
- ✓ High quality standards



## SET Purpose

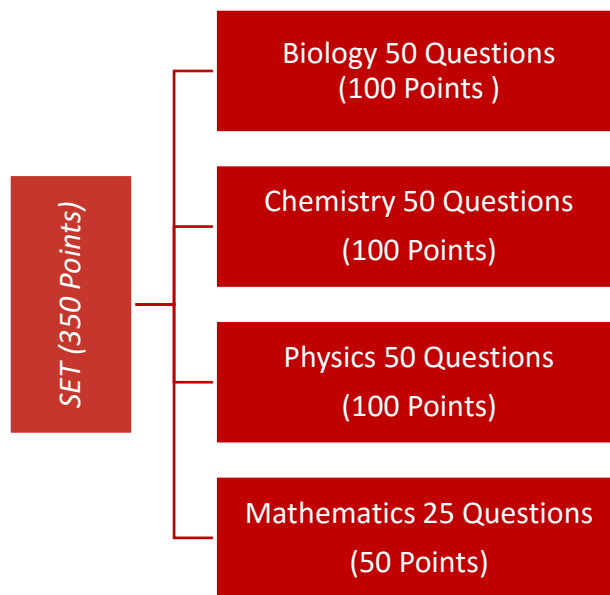
- SET serves as an entrance examination for MBBS study in China’s leading Universities.

- The main purpose of SET is to assess students background knowledge in fundamental subjects namely biology, chemistry, physics and mathematics, thereby providing a standardized student evaluation system.

## About the Test

### Test Format

- The test comprises of 4 main sections namely section 1 to section 4.
- Each section is based on a fundamental knowledge subject.
- The four subjects are Biology, Chemistry, Physics and Mathematics.



### Detailed Test Format

- SET is administered online in standardized delivery centres globally by CCN.
- All test takers face standardized questions from our question bank.

- The questions in each section for each subject cover specified learning objectives as stated within the SET curriculum, however candidates taking the test simultaneously do not necessarily face the same questions.

| Paper Element | Fundamental Subject | Description   |
|---------------|---------------------|---|
| Section 1     | Biology             | <ul style="list-style-type: none"> <li>• 50 Multiple choice questions.</li> <li>• Duration 50 Minutes</li> <li>• 2 points per question</li> <li>• Total Points 100</li> </ul> |
| Section 2     | Chemistry           | <ul style="list-style-type: none"> <li>• 50 Multiple choice questions.</li> <li>• Duration 50 Minutes</li> <li>• 2 points per question</li> <li>• Total Points 100</li> </ul> |
| Section 3     | Physics             | <ul style="list-style-type: none"> <li>• 50 Multiple choice questions.</li> <li>• Duration 50 Minutes</li> <li>• 2 points per question</li> <li>• Total Points 100</li> </ul> |
| Section 4     | Mathematics         | <ul style="list-style-type: none"> <li>• 25 Multiple choice questions.</li> <li>• Duration 50 Minutes</li> <li>• 2 points per question</li> <li>• Total Points 50</li> </ul>  |

- Test takers are required to select their responses amongst the available multiple choice options.

- Available time will be reflected on the screen to ensure all candidates are aware of how much they still have to complete each section.

**SET weighting system.**

- SET applies a 3-3-3-1 system.
- Biology, Chemistry and Physics carrying an equal weight of 0.3 / 30%.
- Mathematics carries a lower weight of 0.1/ 10%.
- This weighting system was developed based on a student's needs assessment for successful MBBS study.

| <b>Subject</b> | <b>Weight</b> |
|----------------|---------------|
| Biology        | 0.3           |
| Chemistry      | 0.3           |
| Physics        | 0.3           |
| Mathematics    | 0.1           |